

Navarro, Rachel

---

**From:** South, aanapisi.south  
**Sent:** Thursday, November 16, 2023 1:58 PM  
**Subject:** [resending for corrections] what do you call a computer that can sing? - AANAPISI Newsletter (Nov. 16)\*

Adele 😎

*\*This is a resend of the November 16 Newsletter sent at 12:30 PM with corrected information in our "Happenings on Campus" sections to reflect accurate contact information for Clubs; corrected dates + times for Seattle Promise's Financial Aid workshop. Enjoy and thank you for reading!*



**A Newsletter from South Seattle College's AANAPISI Center**

**Fall Quarter - November 16, 2023**



**Open**

**Monday - Thursday\* 9 AM - 4:30 PM**

**Friday 9 AM - 12:30 PM**

*\*Tuesdays offer extra advising hours to 6 PM in RSB Student Services behind Welcome Desk*

**Upcoming Closures**

The AANAPISI Center will be closed Thurs.-Fri, Nov. 23-24 in observance of Thanksgiving.

We will resume our regular hours on Mon., Nov. 27.

## In the AANAPISI Center

say no to anxiety

### Stress Management Workshop

AANAPISI x Counseling Center Collab

Tuesday, November 21 | 1-2 PM

AANAPISI Center (RSB 12)

◊◊ Gain helpful tips on managing stress and anxiety before finals season with mochi donuts and cozy warm drinks ◊◊



Questions?

Dejan Perez  
AANAPISI.south  
@seattlecolleges.edu

WELCOME  
TO ALL



Seattle Colleges is committed to the concept and practice of equal opportunity and reasonable accommodation for all its students, employees, and applicants in education, employment, services, and contracts. Visit [www.seattlecolleges.edu/nds](http://www.seattlecolleges.edu/nds) for full statement.

AANAPISI is 100% federally funded by the U.S. Department of Education in the amount of \$300,000 per year for a period of five years (Oct. 2021-Sept 2026) and is administered by South Seattle College

# Stress Management Workshop

An AANAPISI and Counseling Center Collaboration  
November 21 @ 1-2 PM in AANAPISI Center (RSB12)

Gain insightful tips on managing stress and anxiety before finals season with mochi donuts (by Dochi Donuts) and cozy warm drinks.

*Welcome to all students, staff, and faculty.*

**AA NAPI SI**  
Asian American  
Native American Pacific Islander  
SERVING INSTITUTION  
South Seattle College

**SOUTH SEATTLE COLLEGE**  
**OTTERS**

**Contact**  
aanapisi.south@  
seattlecolleges.edu

**TUESDAY**  
Nov. 28

**&**

**WEDNESDAY**  
Nov. 29

**1-3 PM**  
RSB 12

**WELCOME TO ALL**

Fried Chicken,  
ShareTea, and  
MILLIONS  
Songs  
available!

**KARAOKE!**

Seattle Colleges is committed to the concept and practice of equal opportunity and reasonable accommodation for all its students, employees, and applicants in education, employment, services, and contracts. Visit [www.seattlecolleges.edu/nds](http://www.seattlecolleges.edu/nds) for full statement. AANAPISI is 100% federally funded by the U.S. Department of Education in the amount of \$300,000 per year for a period of five years (Oct. 2021-Sept 2026) and is administered by South Seattle College

# Karaoke and Community

Tues. November 28 & Wed. November 29 @ 1-3 PM  
in AANAPISI Center (RSB 12)

卡拉OK! カラオケ! 노래방! Karaoke Việt! Magic Mic! Karaoke!

Whatever you call it, we got it!

Join us on **Tuesday, November 28** and **Wednesday, November 29 from 1-3 PM** at the AANAPISI Center.

**Jollibee** and **ShareTea** available for as long as supplies last.

We'll be using YouTube to find songs to sing— which gives us a bunch of choices... Maybe **too many** choices.

Below are some recommended playlists to get you started thinking about what you want (or want others) to sing. Check out full selections on popular Karaoke YouTube Channels:

[Sing King](#), [Vietnamese Karaoke](#), [Karafun](#), [Hawaii Kine Karaoke](#) and more!

## ***AANAPISI Karaoke Recommendation Playlists***



### **Take Me to the Islands**

*Genre: Island Reggae*



### **Cowboy Jams**

*Genre: Country*



### **FEELINGS xD**

*Genre: Emo, Rock, 2000s*



**Disney Classics**

*Genre: Musical Theater*



**Your Cool Ate/Tita's Favorites**

*Genre: Pop, RnB, 2000s  
YouTube*



**IDOL**

*Genre: K-POP, K-RnB*

*you're  
otter this  
world*



**aanapisi playlist  
2023- 2024**



**♪ Listen with AANAPISI ♪**

01:43 ————— ● ————— 03:50



VOLUME : ■ ■ ■ ■ ■ ■ ■ ■

Take the AANAPISI center with you in your pocket wherever you go with the AANAPISI Playlist. Keep checking in every week— suggestions are added on a rolling basis.

To add, write it on our list in the AANAPISI Center (RSB 12).

[Listen Here!](#)



**APIA**  
**SCHOLARS**  
Educate. Elevate. Empower.

**Apply to APIA Scholarship Program | Info:** <https://apiascholars.org>

**When:** Due January 9th, 2024 at 5 pm EST

**What:** The APIA Scholarship is our largest scholarship program, open to AANHPI undergraduate students attending any U.S. accredited university or college. Scholarship amounts range from **\$2,500 one-year awards** to **\$20,000 multi-year awards**.

**Questions?**

**Book with an AANAPISI Specialist today!**

[Click Here for Advising](#)

## ***Happenings On Campus***



## **Financial Aid Support Workshop Series**

Virtual on Zoom, Meeting ID: 91346966038 | Various Dates

Receive one-on-one support from a Specialist about FAFSA, WAFSA, and all thing financial aid related. All supplementation aid documents to stay eligible for Seattle Promise are due by December 15th. Check ctcLink today!

### ***Workshops***

November 27 @ 11:00 AM

December 5 @ 11:00 AM

December 13 @ 3:00 PM





## **Free Holiday Food Drive: Open to all!**

Saturday, November 18, 10 AM - 1 PM | North Parking Lot, South Seattle College  
4th Annual SSC Food Pantry & West Seattle Food Bank

For more information, [monica.lundberg@seattlecolleges.edu](mailto:monica.lundberg@seattlecolleges.edu)



## **Trans Day of Remembrance: District Commemorations**

Monday, November 20 | Various Times + Places

Join the Queer Trans Cooperative in commemorating Transgender Day of Remembrance. Commemorating Displays will be up from 11/13-11/21 on South's Library. Sponsored by the Queer-Trans Cooperative, Student Leadership, and District Office of Equity, Diversity, Inclusion, and Community.

### **Events**

A Conversation with Kate Bornstein (Author of *Gender Outlaw*)

**2:00 PM - 3:30 PM** at BE1110 in the Broadway Edison Building at Central Campus or

Online: <https://studentleadership.seattlecentral.edu/trans-day-remembrance-2023>

Candlelight Vigil and Name Reading

**4:00 PM - 7:00 PM** at BE1110, in-person

## Join a Club, Start a Club!



*(okay, maybe not this club exactly, but maybe just as fun!)*

### **5 Reasons to Join (or start) a Student Club!**

1. You get to engage in groups of people who have similar interests with you
2. You'll get a break from your classes
3. You'll get opportunities to not only network with other students, but get to know faculty, staff, community members, and other on-campus organizations at South Seattle College
4. Gain valuable experience in job applicable skills such as guiding meetings, contributing ideas to large projects, marketing, event planning— and so much more!
5. Have fun <3



## Student Clubs at South Seattle College

### Black Student Union

Sandra.Clayton@seattlecolleges.edu

### Book Club

Colisha.Shibly@seattlecolleges.edu

### Culinary Club

Colisha.Shibly@seattlecolleges.edu

### Drama Club

Colisha.Shibly@seattlecolleges.edu

### Gender and Sexuality Alliance

Colisha.Shibly@seattlecolleges.edu

### Greater Somalia Club

Colisha.Shibly@seattlecolleges.edu

### Latin Heritage Club

Colisha.Shibly@seattlecolleges.edu

### Southeast Asian Student Association

jimmynguyen0816@gmail.com

Jimmy.Nguyen5@seattlecolleges.edu

### Transfer Success Club

Colisha.Shibly@seattlecolleges.edu

### Robotics Club

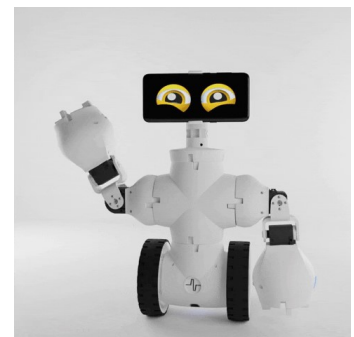
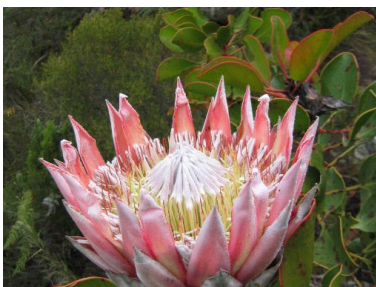
Davon.Hunter@seattlecolleges.edu

### Upcoming and Looking for Members

### Dance Club

Jun.Petty@Seattlecolleges.edu

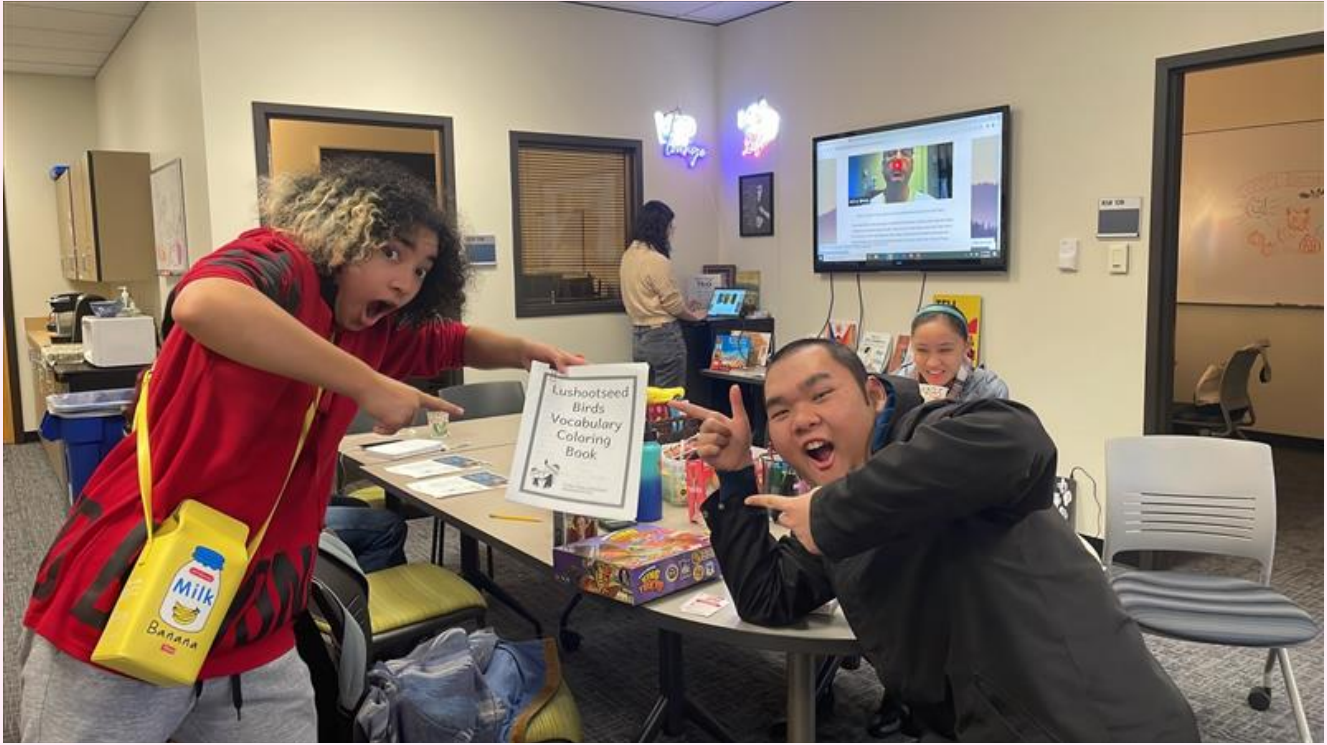
And more upcoming!



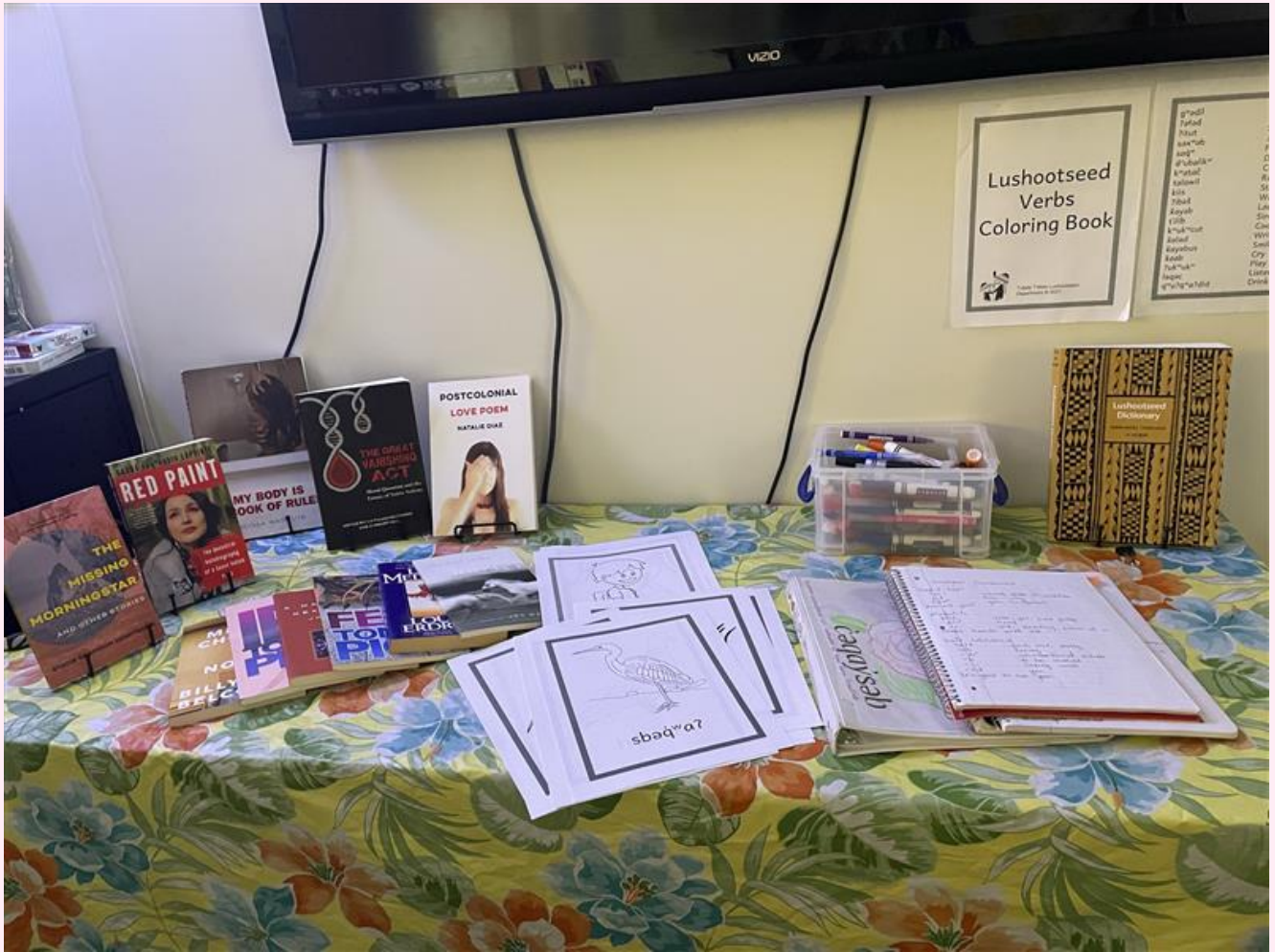
Have a club you want to do but don't see it listed?  
Contact [Colisha.Shibly@Seattlecolleges.edu](mailto:Colisha.Shibly@Seattlecolleges.edu) for more information.



November is Native American Heritage Month, a time of reflection and survivance of Native American tribes throughout this northern continent to reflect on the ancestral and present stewards of this land— both human and more than human relatives.



Pictured: AANAPISI Students Jun and Hung excited for the Printed [Tulalip Lushootseed Birds Vocabulary Coloring Book](#) while Advisor Kaitlin puts up pronunciation videos of Lushootseed on our Center TV. Coloring pages and [language videos](#) will be played in AANAPISI all month long. Completed coloring pages will be in our windows to celebrate a thriving, living language.





**In Language, There is Life: Coloring Book Pages, Native and Indigenous Storytellers, and Listen-Ins**

@ AANAPISI, anytime during center hours!

Coloring Pages from [Tulalip Lushootseed](#)

**Featured Books:**

Belcourt, Billy-Ray. *A Minor Chorus*. Fiction, 2022.

Diaz, Natalie. *Postcolonial Love Poem*. Poetry, 2020.

LaPointe, Sasha taqʷšəblu. *Red Paint: The Ancestral Autobiography of a Coast Salish Punk*. Memoir, 2022.\*

Pico, Tommy. *IRL*. Poetry, 2018.

Pico, Tommy. *Feed*. Poetry, 2019.



Denetsosie, Stacie Shannon. *The Missing Morningstar and Other Stories*. Short story fiction collection, 2023.

Erdrich, Louise. *Love Medicine*. Fiction, 1984.

Harjo, Joy. *She Had Some Horses: Poems*. Poetry, 2008.

Harjo, Joy. *A Map to the Next World: Poems and Tales*. Poetry, 2001.

Dawn Bates, Thom Hess, and Vi Helbert. *Lushootseed Dictionary*. Dictionary, 1994.

*The Great Vanishing Act: Blood Quantum and the Future of Native Nations: Blood Quantum and the Future of Native Nations*, edited by Kathleen Ratteree and Norbert Hill. Essays, 2017.

Washuta, Elissa. *My Body is a Book of Rules*. Memoir, 2014.\*

Miscellaneous notes of Southern Lushootseed from a class instructed by [Tami Hohn](#) (Puyallup) at Pacific Lutheran University, 2018-2020.

(\* indicates Native American to Washington)

Thanks for reading! See you soon!



Rachel, Kat, Libby, Kaitlin, and Dejan

Robert Smith Building - RSB 12

<https://southseattle.edu/aanapisi>

206.934.5221

Join today!



### Mission Statement

The Asian American and Native American Pacific Islander Serving Institution Center (AANAPISI Center) is a centralized gathering space where Asian American, Pacific Islander, and all underserved students receive high quality, culturally relevant programs and services. The AANAPISI Center exists to collaboratively strengthen and sustain an inclusive campus to foster academic success.

Seattle Colleges is committed to the concept and practice of equal opportunity and reasonable accommodation for all its students, employees, and applicants in education, employment, services, and contracts.

Visit [www.seattlecolleges.edu/nds](http://www.seattlecolleges.edu/nds) for full statement.

AANAPISI is 100% federally funded by the U.S. Department of Education in the amount of \$300,000 per year for a period of five years (Oct. 2021-Sept 2026) and is administered by South Seattle College

This was updated 11/02. This is a Biweekly Newsletter. We are not representative of all events on-campus. If you would like to specifically advertise with AANAPISI, please send flyers to [aanapisi.south@seattlecolleges.edu](mailto:aanapisi.south@seattlecolleges.edu) with flyer/information.

