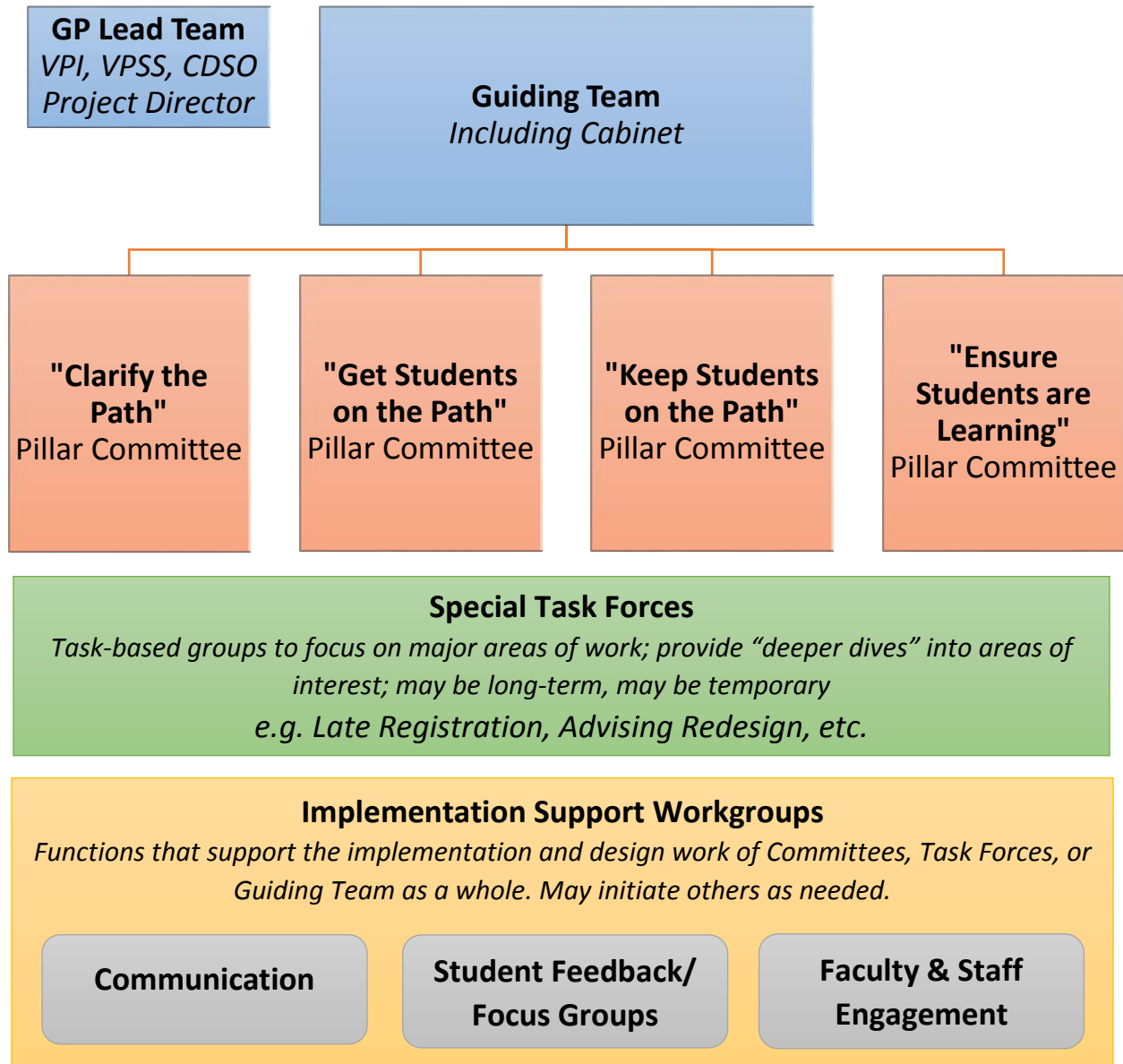


GUIDED PATHWAYS GUIDING TEAM STRUCTURE 2017-2018



Definitions

Pillar Committees: Working groups that are open for participation from any interested individuals across campus, co-chaired by Guiding Team members, focus in the 4 Pillars of Guided Pathways.

Special Task Forces: Support Guiding Team at-large or support Pillar Committee work; enabled to do a deeper dive; participation open to any interested individuals across campus.

Implementation Support Workgroups: Staffed by Guiding Team members primarily, with key stakeholders also invited, chaired by a Guiding Team member most aligned to work; leads work that supports and informs the implementation work of the subcommittees and Guiding Team at large.